



# SAW Components

Data Sheet B7750





SAW Components

B7750

Low-Loss Filter for Mobile Communication

2140,0 MHz

Data Sheet



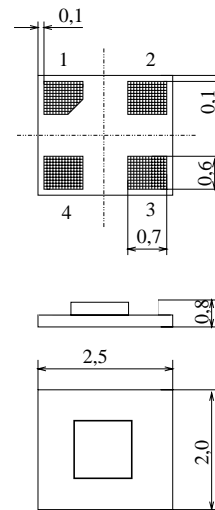
Chip Sized SAW Package DCS4D

**Features**

- RF filter for mobile telephone UMTS systems, receive path
- Low insertion loss, low amplitude ripple
- Usable passband 60 MHz
- Package for Surface Mounted Technology (SMT)

**Terminals**

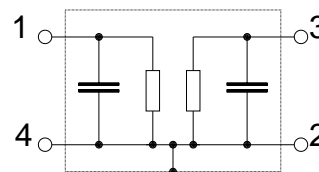
- Gold-plated Ni



Dimensions in mm, approx. weight 0,012 g

**Pin configuration**

- 1 Input
- 3 Output
- 2,4 Ground



Type	Ordering code	Marking and Package according to	Packing according to
B7750	B39212-B7750-C810	C61157-A7-A89	F61074-V8125-Z000

Electrostatic Sensitive Device (ESD)

**Maximum ratings**

Operating temperature range	$T$	- 20/ +85	°C	
Storage temperature range	$T_{stg}$	- 40/ +85	°C	
DC voltage	$V_{DC}$	3	V	
Input Power max.	$P_{IN}$	13	dbm	source and load impedance 50 $\Omega$



**Characteristics**

Operating temperature range:  $T = 25\text{ }^{\circ}\text{C}$   
 Terminating source impedance:  $Z_S = 50\ \Omega$   
 Terminating load impedance:  $Z_L = 50\ \Omega$

		min.	typ.	max.	
<b>Center frequency</b>	$f_C$	—	2140,0	—	MHz
<b>Maximum insertion attenuation</b> 2110,0... 2170,0 MHz	$\alpha_{\max}$	—	2,4	2,6	dB
<b>Amplitude ripple (p-p)</b> 2110,0... 2170,0 MHz	$\Delta\alpha$	—	0,7	0,9	dB
<b>Absolute attenuation</b>	$\alpha$				
0 ... 1500,0 MHz		40	43	—	dB
1500,0.. 1880,0 MHz		35	40	—	dB
1920,0.. 1980,0 MHz		34	36	—	dB
2025,0.. 2050,0 MHz		23	25	—	dB
2205,0.. 2265,0 MHz		15	25	—	dB
2230,0.. 2260,0 MHz		22	24	—	dB
2300,0... 2360,0 MHz		33	38	—	dB
2490,0... 2550,0 MHz		37	43	—	dB
2870,0... 2930,0 MHz		31	36	—	dB
4000,0... 6000,0 MHz		20	31	—	dB
<b>Input VSWR</b> 2110,0... 2170,0 MHz		—	1,9	2,1	
<b>Output VSWR</b> 2110,0... 2170,0 MHz		—	1,8	2,0	



**Characteristics**

Operating temperature range :  $T = -20$  to  $+75$  °C  
 Terminating source impedance:  $Z_S = 50 \Omega$   
 Terminating load impedance:  $Z_L = 50 \Omega$

		min.	typ.	max.	
<b>Center frequency</b>	$f_C$	—	2140,0	—	MHz
<b>Maximum insertion attenuation</b> 2110,0... 2170,0 MHz	$\alpha_{max}$	—	2,5	2,7	dB
<b>Amplitude ripple (p-p)</b> 2110,0... 2170,0 MHz	$\Delta\alpha$	—	0,8	1,0	dB
<b>Absolute attenuation</b>	$\alpha$				
0 ... 1500,0 MHz		40	43	—	dB
1500,0.. 1880,0 MHz		35	40	—	dB
1920,0.. 1980,0 MHz		34	36	—	dB
2025,0.. 2050,0 MHz		20	25	—	dB
2205,0.. 2265,0 MHz		10	20	—	dB
2230,0.. 2260,0 MHz		22	24	—	dB
2300,0... 2360,0 MHz		33	38	—	dB
2490,0... 2550,0 MHz		37	43	—	dB
2870,0... 2930,0 MHz		31	35	—	dB
4000,0... 6000,0 MHz		20	31	—	dB
<b>Input VSWR</b> 2110,0... 2170,0 MHz		—	1,9	2,2	
<b>Output VSWR</b> 2110,0... 2170,0 MHz		—	2,0	2,2	



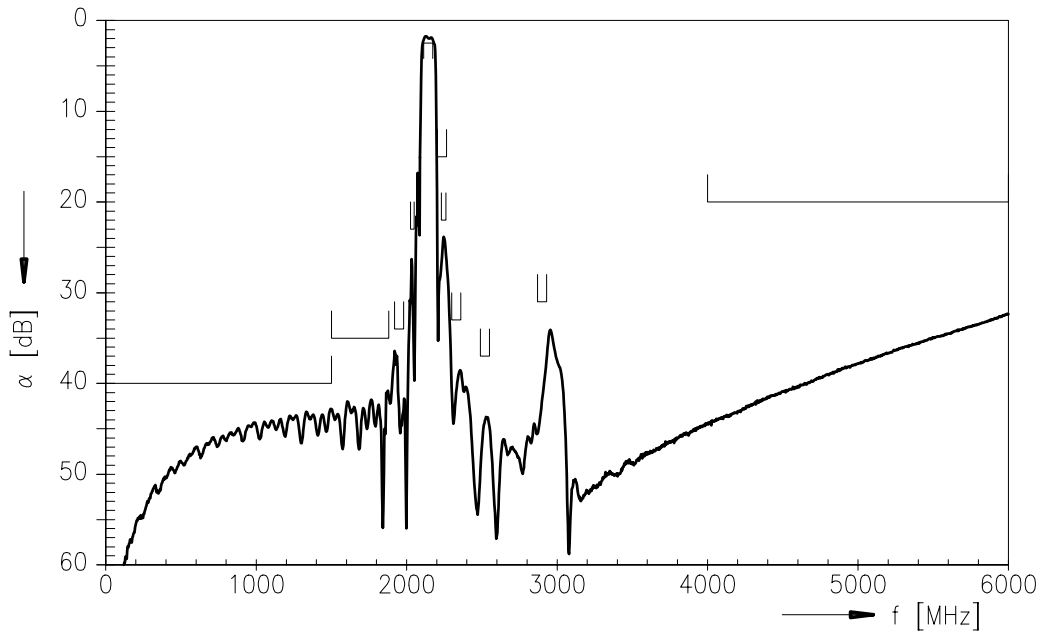
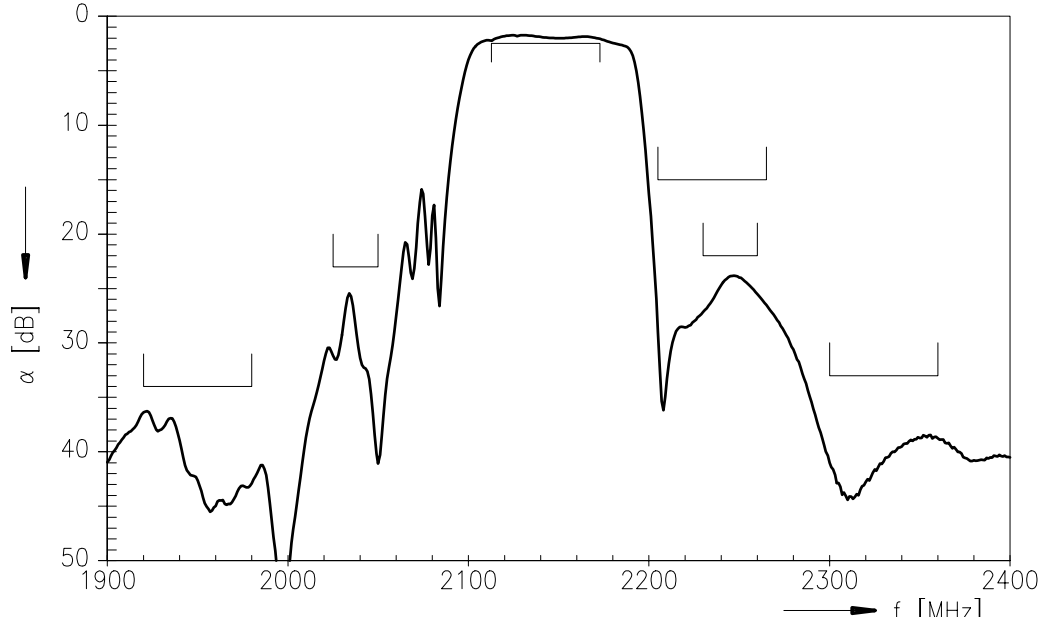
**Characteristics**

Operating temperature range :  $T = -20$  to  $+85$  °C  
 Terminating source impedance:  $Z_S = 50 \Omega$   
 Terminating load impedance:  $Z_L = 50 \Omega$

		min.	typ.	max.	
<b>Center frequency</b>	$f_C$	—	2140,0	—	MHz
<b>Maximum insertion attenuation</b> 2110,0... 2170,0 MHz	$\alpha_{max}$	—	2,6	2,8	dB
<b>Amplitude ripple (p-p)</b> 2110,0... 2170,0 MHz	$\Delta\alpha$	—	0,8	1,0	dB
<b>Absolute attenuation</b>	$\alpha$				
0 ... 1500,0 MHz		40	43	—	dB
1500,0.. 1880,0 MHz		35	40	—	dB
1920,0.. 1980,0 MHz		34	36	—	dB
2025,0.. 2050,0 MHz		20	26	—	dB
2205,0.. 2265,0 MHz		10	20	—	dB
2230,0.. 2260,0 MHz		22	24	—	dB
2300,0... 2360,0 MHz		33	38	—	dB
2490,0... 2550,0 MHz		37	43	—	dB
2870,0... 2930,0 MHz		31	35	—	dB
4000,0... 6000,0 MHz		20	31	—	dB
<b>Input VSWR</b> 2110,0... 2170,0 MHz		—	1,9	2,2	
<b>Output VSWR</b> 2110,0... 2170,0 MHz		—	2,0	2,2	



Transfer function (spec. for 25 °C)





**SAW Components**

**B7750**

**Low-Loss Filter for Mobile Communication**

**2140,0 MHz**

Data Sheet



**Published by EPCOS AG**

**Surface Acoustic Wave Components Division, SAW MC PD**

**P.O. Box 80 17 09, D-81617 München**

© EPCOS AG 2004. Reproduction, publication and dissemination of this brochure and the information contained therein without EPCOS' prior express consent is prohibited.

Purchase orders are subject to the General Conditions for the Supply of Products and Services of the Electrical and Electronics Industry recommended by the ZVEI (German Electrical and Electronic Manufacturers' Association), unless otherwise agreed.

This brochure replaces the previous edition.

For questions on technology, prices and delivery please contact the Sales Offices of EPCOS AG or the international Representatives.

Due to technical requirements components may contain dangerous substances. For information on the type in question please also contact one of our Sales Offices.